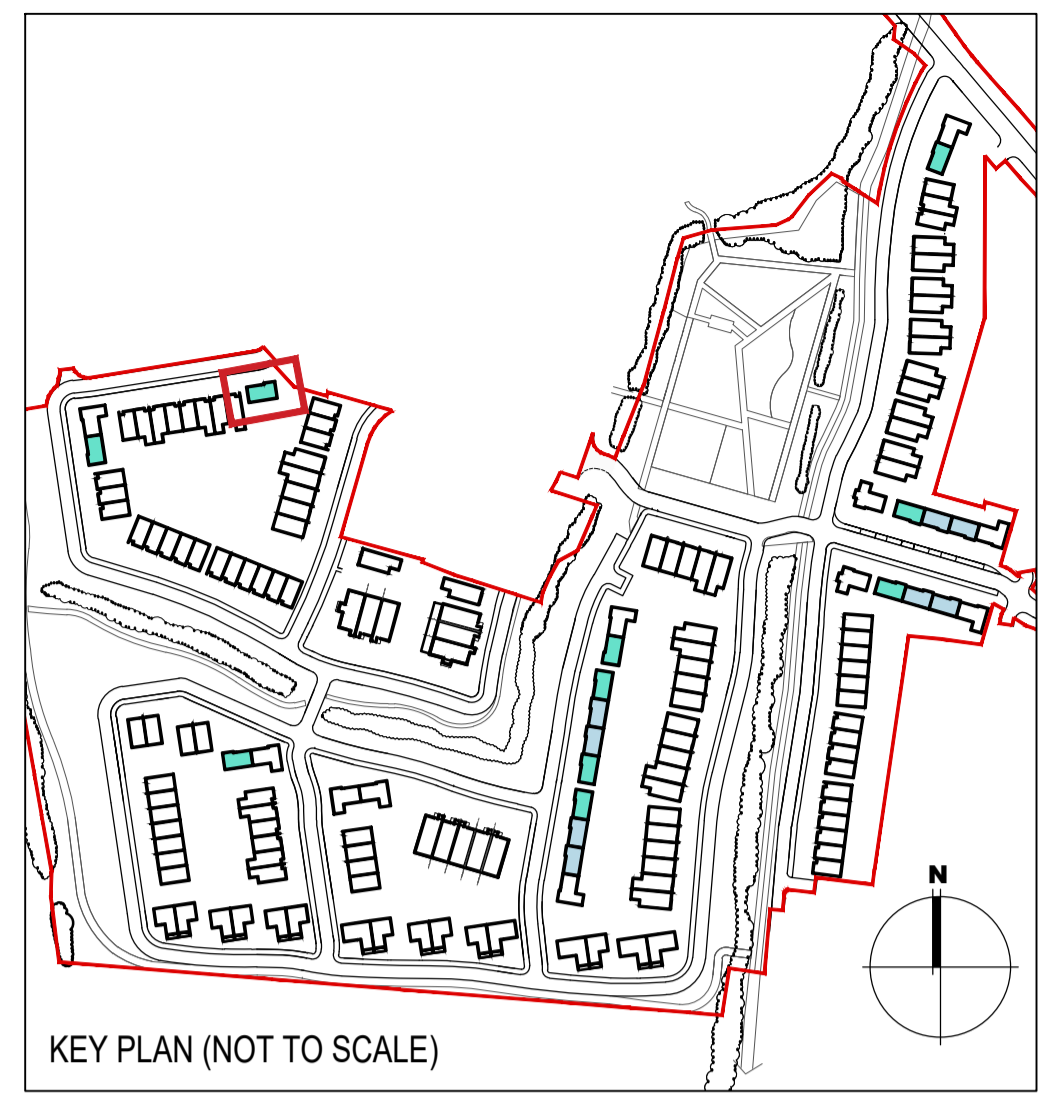


| | | | |
|--------------------------------|----------------------|---------------------|--|
| HOUSE TYPE C3 | | | |
| Ground floor area | 59.3.0m ² | | |
| First floor area | 59.3.0m ² | | |
| Total Floor Area (3-bed unit): | | 118.6m ² | |



EXTERNAL FINISHES

WALLS: PAINTED SAND / CEMENT RENDER OR PROPRIETARY PRECOLOURED RENDER FINISH
SELECTED BRICKWORK WHERE INDICATED ON DRAWINGS

WINDOWS: SELECTED PROPRIETARY DOUBLE / TRIPLE GLAZED WINDOW SYSTEM WITH FRAMES TO APPROVED COLOUR
OBSCURED GLAZING TO BATHROOMS AND EN-SUITES.

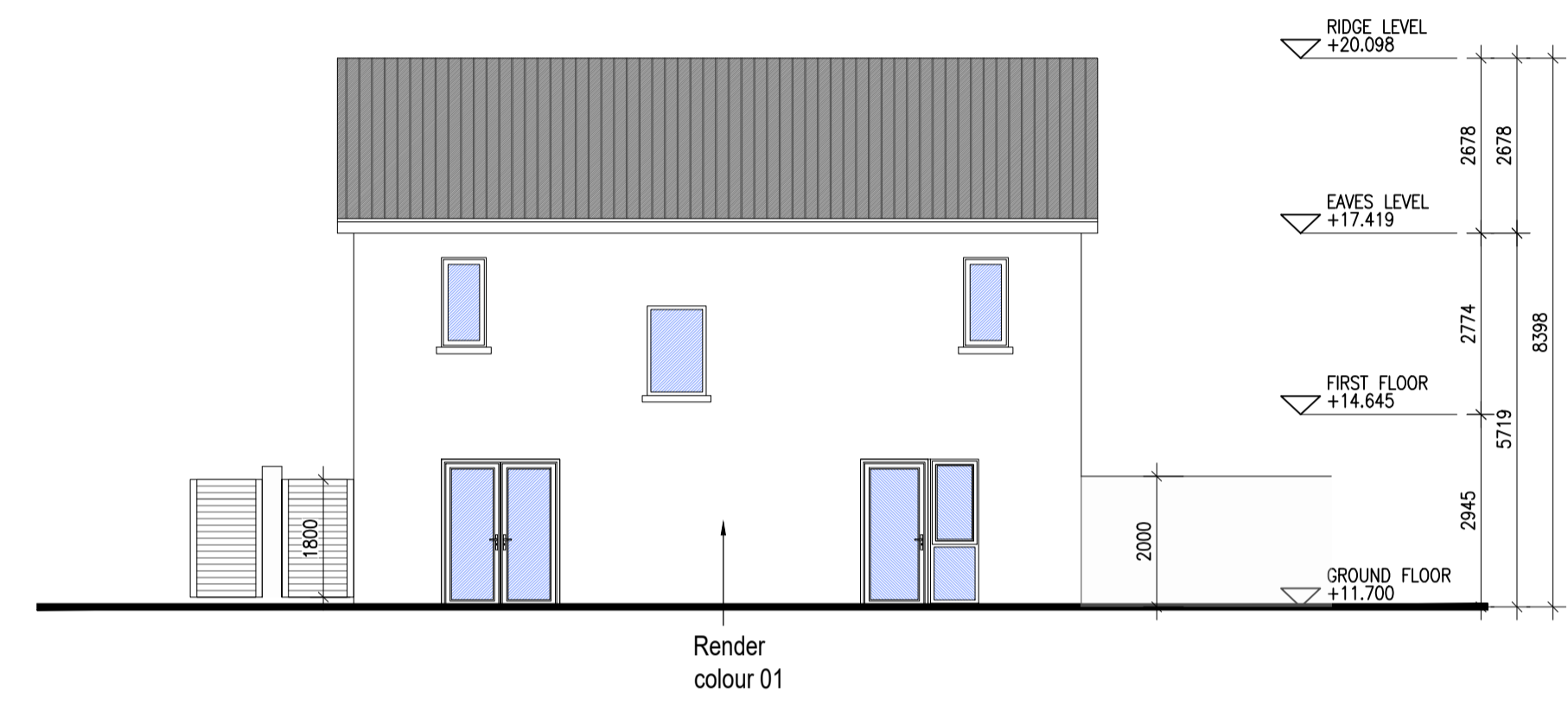
DOORS: SELECTED PROPRIETARY DOORS AND GLAZED SIDE SCREENS TO APPROVED COLOUR.

RAINWATER GOODS: uPVC OR POWDER COATED METAL GUTTERS AND RAINWATER PIPES TO SELECTED COLOUR.

MAIN ROOF: CONCRETE ROOF TILES IN SELECTED COLOUR.

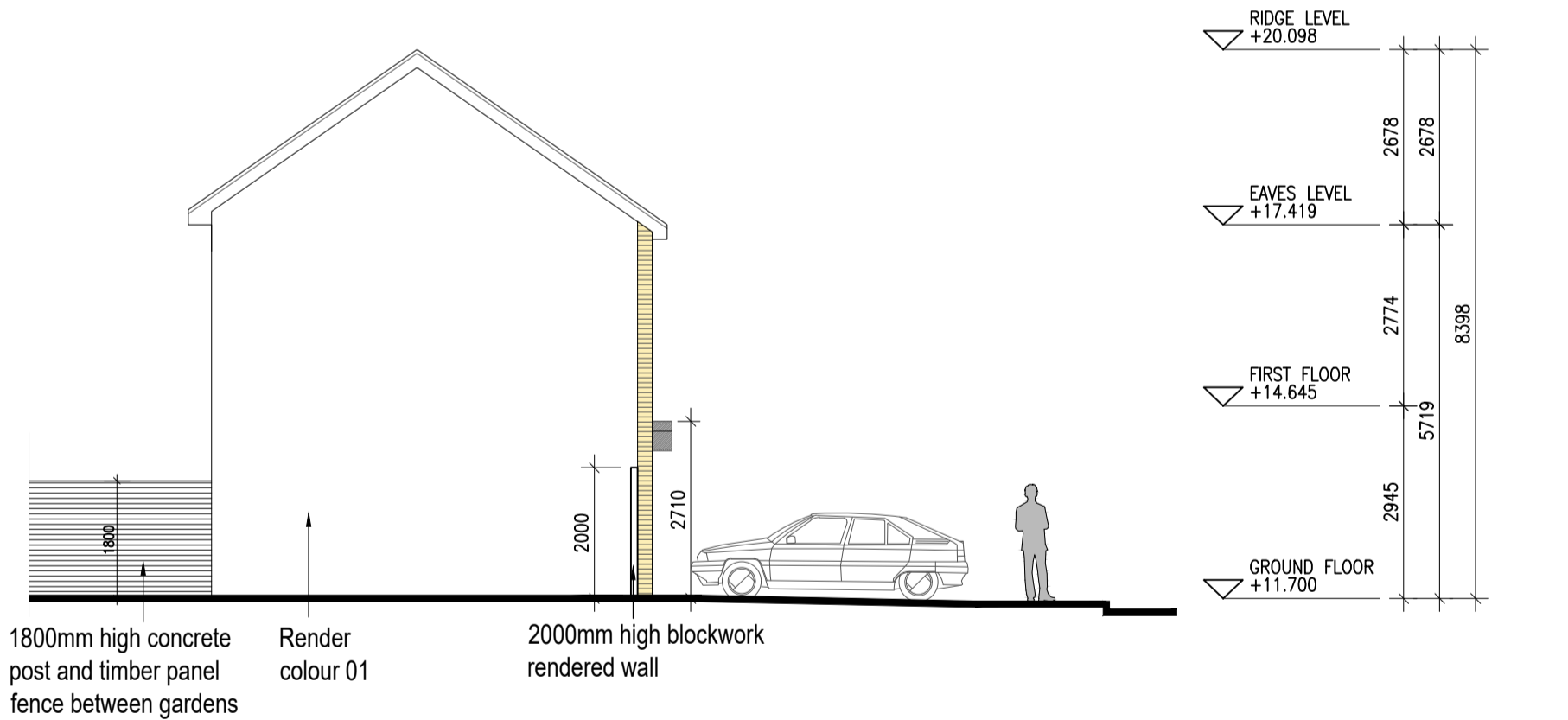
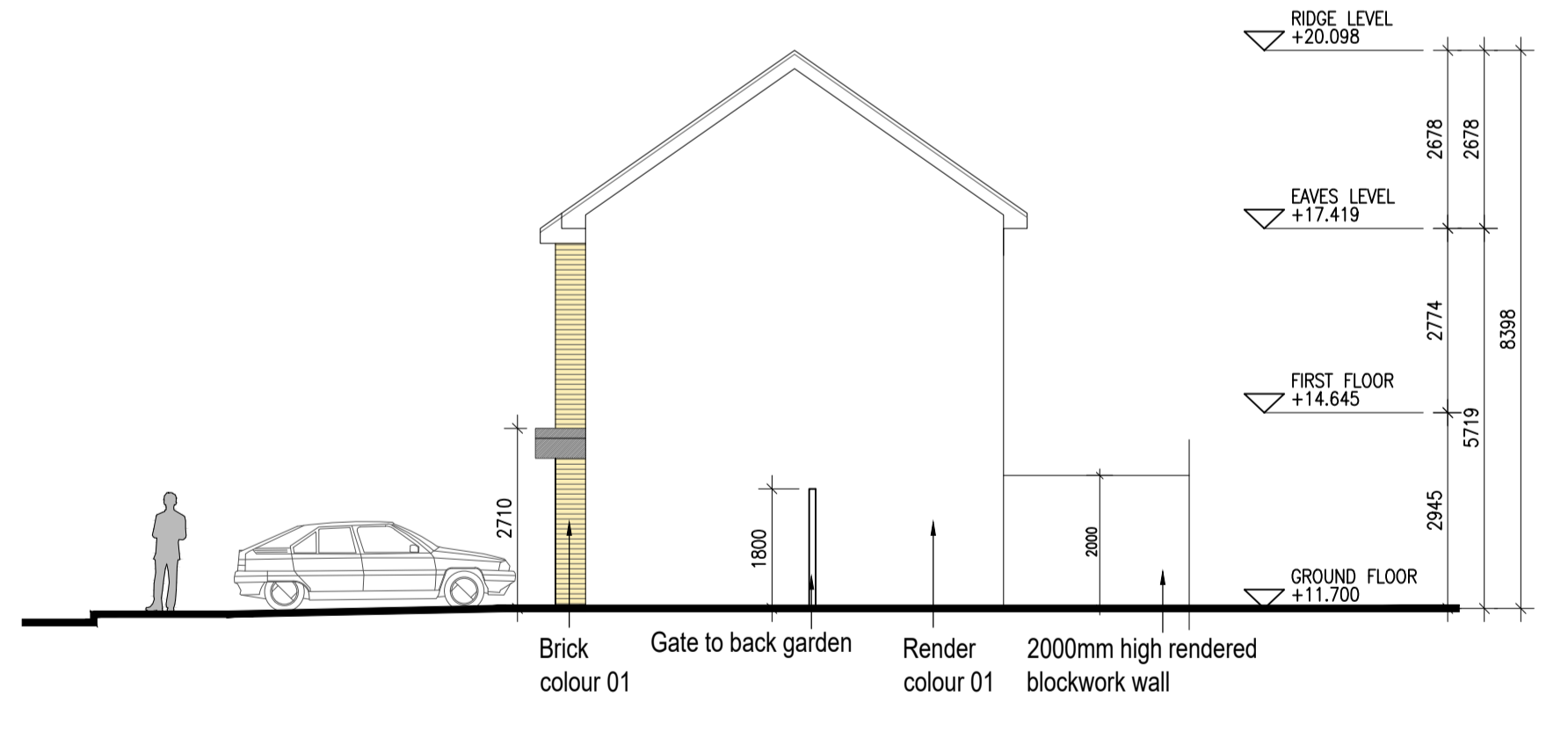
LOW LEVEL PROJECTION: ZINC CANOPY ROOF TO REAR OF UNITS

OTHER ITEMS: uPVC OR POWDER COATED METAL FASCIAS, SOFFITS AND BARGE BOARDS
PAINTED MILDSTEEL RAILINGS AND BALUSTRADES



TYPE C3
01 Type C3 - Front Elevation
1:100@A1 3 BED HOUSE

TYPE C3
02 Type C3 - Rear Elevation
1:100@A1 3 BED HOUSE



TYPE C3
03 Type C3 - Side Elevation
1:100@A1 3 BED HOUSE

TYPE C3
04 Type C3 - Side Elevation
1:100@A1 3 BED HOUSE

| HOUSES TYPES | | | | Numbers of units |
|-------------------------|-----------------------|-----------|----|------------------|
| Type A1/A2/A3 | 3 bed [2st.] | 108.6 sqm | 32 | |
| Type A4/A5/A6 | 3 bed [2st.] | 117.6 sqm | 11 | |
| Type B1/B2/B3 | 3 bed [2st.] | 110.6 sqm | 22 | |
| Type C1 | 3 bed [2st.] | 118 sqm | 9 | |
| Type C2 | 3 bed [2st.] | 117.4 sqm | 8 | |
| Type C3 | 3 bed [2st.] | 118.6 sqm | 1 | |
| Type D1 | 4 bed [2st.] | 141 sqm | 9 | |
| Type D2 | 4 bed [2st.] | 142 sqm | 2 | |
| Type F1 | 4 bed [2st.] | 134.4 sqm | 11 | |
| Type F2 | 4 bed [2st.] | 135.6 sqm | 5 | |
| Type F3 | 4 bed [2st.] | 146.5 sqm | 2 | |
| Type F4 | 4 bed [2st.] | 146.4 sqm | 5 | |
| Type F5 | 4 bed [2st.] | 147.8 sqm | 17 | |
| Type G | 3 bed [1.5st.] | 114 sqm | 11 | |
| Type H | 4 bed [1.5st.] | 147 sqm | 5 | |
| DUPLEXES | | | | |
| Type J1/J2 | 2 bed Apart. [1st.] | 78.5 sqm | 9 | |
| Type K1/K2 | 3bed Duplex [2st.] | 114.4 sqm | 9 | |
| Type J3 | 2 bed Apart. [1st.] | 83.5 sqm | 2 | |
| Type K3 | 3bed Duplex [2st.] | 114.4 sqm | 2 | |
| Total Residential Units | | | | 172 |

REFER TO LANDSCAPE ARCHITECT'S DRAWINGS FOR ALL LANDSCAPING DETAILS INCLUDING BOUNDARY TREATMENTS

HOUSE TYPE C3

Project: Portmarnock South Phase 1D
Quintain Developments Ireland Limited

6-7 HARPOUR TERRACE, DUBLIN 2, IRELAND
1-353-1-6782400 1-353-1-6787395
www.bkd.ie

Drawing Title: House Type C3 - Elevations
Drawing No: 61588-P-069
Scale: 1:100@A1 Rev: 01 Drawn: RT Date: 26.11.2021

bkdarchitects
BURKE-KENNEDY DOYLE

| Notes | Issue Status | No. | Date | Revision | Initials |
|------------------------------------------------------------------------------------------------------------------------------------|----------------------|-----|------------|---------------------------------|----------|
| 1. Copyright Reserved | Progress | 01 | 26.11.2021 | SHD PLANNING APPLICATION TO ABP | RT |
| 2. Work to agreed dimensions only. Do not scale drawing | Planning Application | | | | |
| 3. The contractor is responsible for checking all levels and dimensions on site and shall refer all discrepancies to the Architect | Fire Cert | | | | |
| 4. Where appropriate, for details of r.c. structure, or mechanical and electrical details, see Engineers drawings | Disability Cert | | | | |
| 5. Proprietary items shall be fixed in strict accordance with manufacturers instructions. | Tender | | | | |
| 6. Sizes of proprietary items shall be checked with manufacturer. | Construction | | | | |
| 7. The contractor shall be responsible for the coordination of structure, finishes and services. | As Built | | | | |
| Information Only: Type C1,C2,C3- Plans, Section | | | | | |